

Technical Bulletin

Bulletin Number: 179 Revision Number: R-01

Release Date: February 25, 1975 Revision Date: January 7, 1997

SUBJECT: SECURITY KIT - DISCHARGE MEMBER
(Also see TB 397)

MODELS: All Serpentine except Stylestar Models.

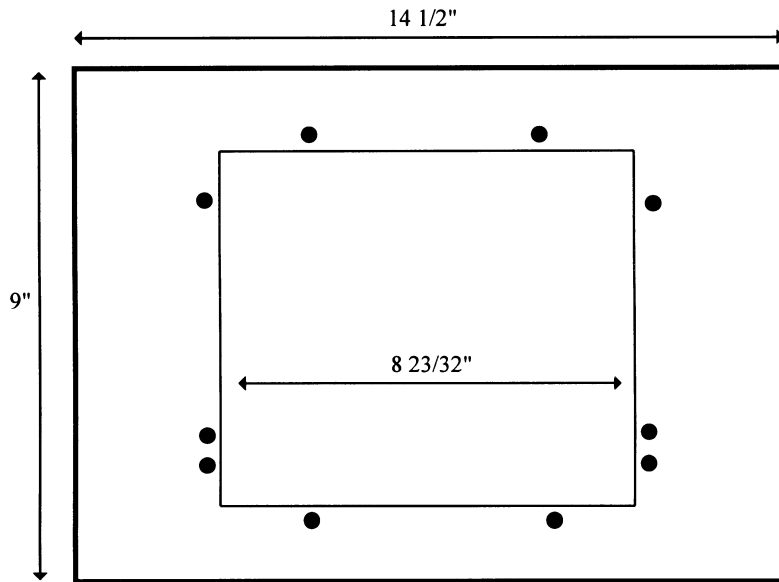
REASON: To provide a discharge member of heavy gauge steel to deter vandalism of the port area.

ORDER: 176,010,900.04 Security Kit Single Port
169,010,900.04 Security Kit Double Port

Instructions:

1. Study figure 1 on page 2.
2. Kit consists of the following replacement parts:

| | |
|--------------------|-----------------------|
| 1 - 169,151,200.03 | w/a Closure Strip |
| 1 - A1290.36 | Security Plate |
| 4 - 900,201,170.01 | Carriage Bolt and Nut |
| 4 - 903,000,070.02 | Lock Washer |
| 4 - 900,700,070.01 | Flat Washer |
3. One closure strip is provided (as shown in figure 1). It is used on Serpentine having steel "U" member at delivery port.
On Serpentine having plastic member projecting at delivery port, install security plate instead of closure strip.



Port Trim Stiffener Plate
B5510.06

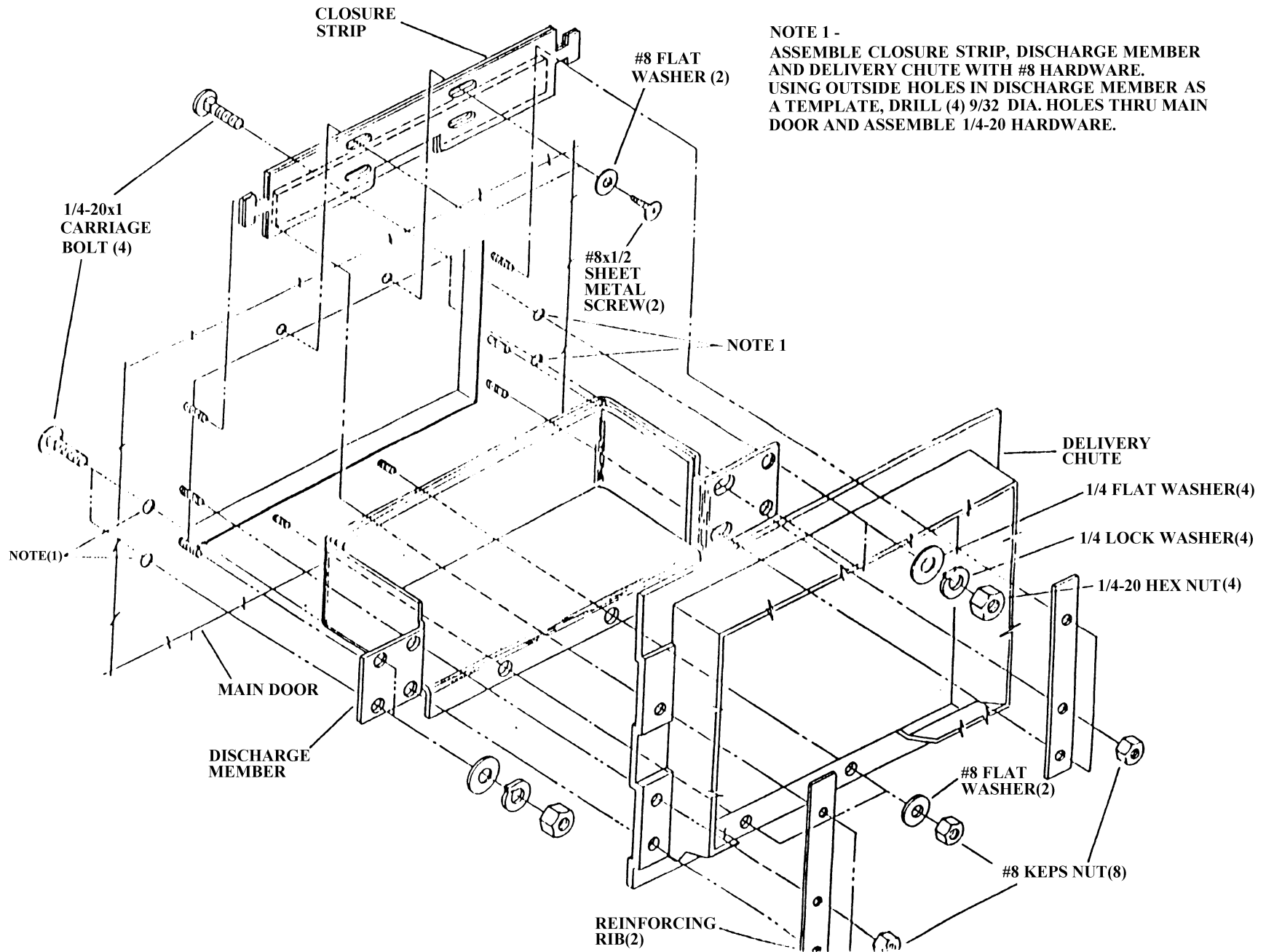


FIGURE 1